



Young
Enterprise

Member of JA Worldwide

- FINANCIAL CAPABILITY
- ENTREPRENEURSHIP
- WORK READINESS

TEAM PROGRAMME



An Introduction for Educators

TEAM
PROGRAMME



WELCOME TO TEAM PROGRAMME

At Young Enterprise (YE) our vision is that every young person has the opportunity to learn the vital skills and enterprising mindset needed to earn and look after their money and make a positive contribution to their community. Our mission is to empower young people to discover, develop and celebrate their skills and potential.

Team is an exciting flexible enterprise journey from YE that is suitable for young people aged 15 to 19+ who have mild to moderate learning difficulties or are studying for Entry Level or Level 1 qualifications. The programme is designed to support the transition from education into independent living and employment, developing life skills through the experience of working as a team to set up and run a business.

Each Team Programme company can be made up of a maximum of 25 students.

Over an academic year, young people work in teams to set up and run a real company under the guidance of their lead educator and supported by a local volunteer and a YE Educational Partnerships Manager. Each student takes on a job role within the team and is responsible for an area of the business such as Management, Finance, Production, Events, Marketing, Sales or Administration. Students have the opportunity to manage money, open a business current account, interact with volunteers and customers at sales events and present to an audience.

HOW CAN TEAM PROGRAMME SUPPORT YOUR SCHOOL AND STUDENTS?

Taking part in Team Programme will equip your young people to develop:



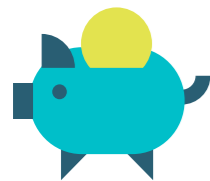
PERSONAL SKILLS

Self-awareness to recognise personal strengths, preferences, areas for personal development. Improve confidence to communicate and interact with people in a variety of situations including working as part of a team.



LIFE/EMPLOYABILITY SKILLS

Understand and develop essential life skills to help with transition into employment or independent living. Develop key work-based skills such as communication, teamwork, problem solving, money management and work readiness.



FINANCIAL CAPABILITY

Confidence in handling money and understanding of numbers in a practical context, as well as developing understanding of the important role money plays in business and everyday lives.

Delivering Team Programme can support schools with:



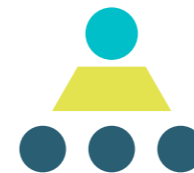
THE CURRICULUM

Consolidating and developing learning of other curriculum areas such as, English, Mathematics, D&T and Computing and bringing that learning to life for students, through practical application.



DUKE OF EDINBURGH

Evidencing the skills section of the Duke of Edinburgh Award Scheme.



GATSBY BENCHMARKS

Contributing towards the Gatsby Benchmarks of good career guidance.



HOW DOES YOUNG ENTERPRISE SUPPORT TEAM PROGRAMME EDUCATORS?

Team Programme depends upon a teacher, lecturer or teaching assistant to facilitate and support the delivery of the programme in each school and college, working closely with a volunteer. Educators do not need to have business experience or knowledge to carry out this role.

1

THE ROLE OF THE VOLUNTEER

Educators and students may have an opportunity to work with a volunteer. These are volunteers from the local community who are keen to make time to share their skills, knowledge and experience with students. The volunteer will act as a consultant, facilitator and motivator when helping students to run their company. All YE Team Programme volunteers have a valid DBS and have completed our safeguarding training.

2

THE ROLE OF YOUNG ENTERPRISE

Local YE Educational Partnerships Managers provide help and support to educators and volunteers.

3

TEAM PROGRAMME DELIVERY & RESOURCE GUIDE

To run the programme, educators are provided with the Team Programme delivery and resource guide which contains clear, step-by-step support for educators to confidently work through each stage with students. This includes explanations of key business terminologies, opportunities for assessment and differentiation as well as hints for delivery.

The guide also contains adaptable resources; allowing educators to pick and choose which resources to use with students. The resources are flexible and can be tailored to meet the requirement of the specific cohort of students.



It is clear to see the progression our students make from taking part each year. Confidence and communication skills significantly increase and this has a great bearing on their ability to gain sustainable employment. – Teacher

4

COMPANY CONNECT

Company Connect offers a range of resources to support educators and volunteers, as well as students.

These include:

- Downloadable resources
- A finance accounts package
- Access to YE Trading Station: a bespoke online sales platform
- Student worksheets
- Videos
- Information about competitions
- Tasks with points and badges available to celebrate young people's achievements throughout



**COMPANY
CONNECT
CLICK HERE**

5

EDUCATOR TOOLKIT

Company Connect also provides an Educator Toolkit which includes downloadable copies of all the worksheets within the Team Programme Delivery and Resource Guide.



82%

of teachers agreed that Team Programme improved teamwork and problem-solving skills.



73%

of teachers agreed Team Programme improved work readiness.

THE STEPS TO TEAM PROGRAMME

The programme content is split into eight milestones on Company Connect.



CLICK HERE
FOR OUR INTERACTIVE
MILESTONE MAP

Getting Started (Milestones 1 and 2)

INTRODUCTION TO TEAM PROGRAMME

Develop an understanding of the programme and meet the volunteer.

COMPANY MEETINGS

Hold the first company meeting and develop a structure for subsequent meetings.

CHOOSING JOB ROLES

Choose jobs roles based on the skills and abilities of each team member.



Business Planning (Milestones 3 and 4)

STARTING THE COMPANY

Deciding on a company name and logo and creating a mission statement.

CHOOSING A BUSINESS IDEA

Working as a team to decide what product or service to make.

FINDING OUT WHAT YOUR CUSTOMERS WANT

Conducting and analysing market research.

KEEPING TRACK OF FINANCES

Raising capital, opening a business current account and developing an understanding of 'money in' and 'money out'.



Running the Business (Milestones 5 and 6)

MAKING YOUR PRODUCT OR SERVICE

Planning and producing the product or service.

PROMOTING YOUR PRODUCT OR SERVICE

Promoting the product or service through various means, including advertising.

PLANNING FOR SELLING EVENTS

Creating a trade stand and selling at in person at events.



Winding Up and Next Steps (Milestones 7 and 8)

CLOSING DOWN YOUR YOUNG ENTERPRISE COMPANY

Following a step-by-step process to 'wind up' the student company.

TEAM PROGRAMME SELF-REFLECTION AND EVALUATION

Reflecting on the programme, including skills learned and developed during the process.



COMPETITIONS

Throughout Team Programme student companies will have opportunities to participate in local and national competitions, offering a variety of learning development opportunities. These include presentation skills, money management, communication and teamwork.

OUTSTANDING INDIVIDUAL ACHIEVEMENT AWARD

This national award is made on an annual basis to the individual Team Programme student who has made the most progress and shown the most development through their participation in the programme.

To find out more, or get started on your Team Programme journey, simply fill out an expression of interest form by [clicking here](#) and a YE representative will be in touch with you.



Young
Enterprise

Member of JA Worldwide

- FINANCIAL CAPABILITY
- ENTREPRENEURSHIP
- WORK READINESS

CONTACT US

Thank you for your interest in Team Programme. We hope your students enjoy the experience!

If you have any questions about Team Programme please contact your local Educational Partnerships Manager for assistance. Contact details for your regional representative are available on our [website](#).

Alternatively, you can contact our programmes team on info@y-e.org.uk or call 01865 776845

To find out more about our full range of programmes and services visit:

www.young-enterprise.org.uk



Young Enterprise
The Coram Campus,
41 Brunswick Square,
London WC1N 1AZ



-  Like
[@YoungEnterpriseUK](https://www.facebook.com/YoungEnterpriseUK)
-  Tweet
twitter.com/youngenterprise
-  Follow
[@youngenterpriseuk](https://www.instagram.com/youngenterpriseuk)
-  Watch
[youtube.com/youngenterpriseuk](https://www.youtube.com/youngenterpriseuk)
-  Connect
[linkedin.com/school/young-enterprise-uk](https://www.linkedin.com/school/young-enterprise-uk)